

CERTIFICATE OF LOCATION OF GOVERNMENT CORNER

EAST QUARTER Corner of Section 7, Township 107N, Range 39W

5th Principal Meridian, State of Minnesota, County of MURRAY

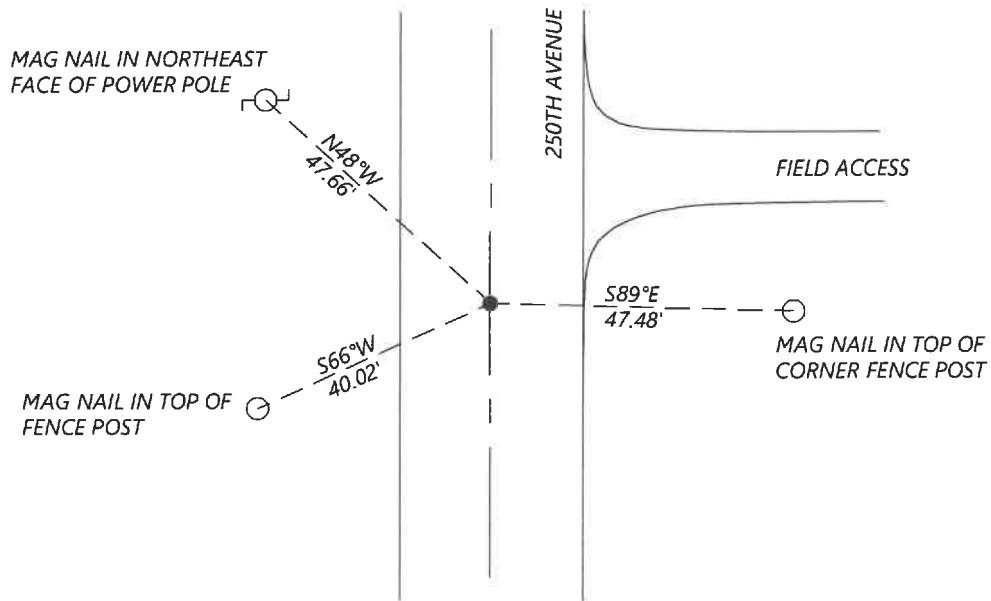
At the corner location shown on the sketch:

On 8/27/2020 found a NO. 6 REBAR WITH 1" ALUMINUM CAP STAMPED "DNR SURVEY MARKER". 0.4FT BELOW GRADE
DATE

left monument as found lowered monument removed monument (explain)

On _____ placed a _____
DATE

SKETCH OF REFERENCE TIES



N.T.S.

Statement of evidence for this corner location is on back of this page.

I hereby certify that this document was researched and prepared by me or under my direct supervision and that I am a licensed Land Surveyor under the laws of the State of Minnesota.

Signature [Handwritten Signature]

Date 6/16/2021 License No. 45874

Title:

- Land Surveyor
- Professional Engineer
- County Surveyor
- County Engineer

OFFICE OF THE COUNTY RECORDER

County of Murray

I hereby certify that this document was filed in the Co.

Recorder's office at _____ M. on the _____ day of _____ A.D. 20

County Recorder Karen Brown
by JUN 22 2021, Deputy

DOCUMENT NO. _____

Statement of Evidence:

East Quarter Corner of Section 7, Township 107 North, Range 39 West, 5th Principal Meridian, Murray County, Minnesota.

The DNR Bureau of Engineering contacted the following for survey information:

Minnesota Secretary of State's Office

Murray County Recorder's Office

Murray County Highway Engineer's Office

- 1861 *U.S. General Land Office notes obtained from the Secretary of State's office show the corner marked with pits and mound.*
- 1991 *October, DNR Bureau of Engineering hired a backhoe to dig for evidence of a monument at corner. Dug a 4ft east-west by 15ft north-south by 3ft deep hole at the center being in the centerline of a north-south road and inline with fences east and west. No evidence of a monument was found. Set a DNR Survey Marker on the centerline of the north-south road and inline with the fences east and west and found it to be:*
- 2673.88ft from the northeast corner of Section 7*
2631.69ft from the northeast corner of Section 18
21.07ft south and 4.5ft east of the computed lost position for corner.
- 2020 *September, Westwood Professional Services searched and found an iron with 1" aluminum cap stamped "DNR SURVEY MARKER" at intersection of centerline of 250th Avenue and fence lines east and west. No ties were recovered. Accepted found monument and set new reference ties.*

Analysis of the recovered data, field evidence and survey measurements, indicates that the monument found is the correct perpetuation of this corner. For additional information concerning this corner please contact Westwood Professional Services.